

Water Damaged Building Organisms and Biotoxins

MOLD

Spores

Purpose: Reproduction

Mycotoxins

Purpose: Defense

mVOCs

Purpose: Digestion

BACTERIA

Actinomyces

A group of gram-positive bacteria that produce various biotoxins

Endotoxin

Components of gram-negative bacteria that shed upon death of the bacteria

Three (3) Levels of The Indoor Environment



Three (3) Levels of The Indoor Environment

Level 1: The top level is the central heating, ventilation, and air conditioning (HVAC) system



Three (3) Levels of The Indoor Environment

Level 1: The top level is the central heating, ventilation, and air conditioning (HVAC) system

Level 2: The middle level is the building's structural components (i.e. walls, windows, etc.)

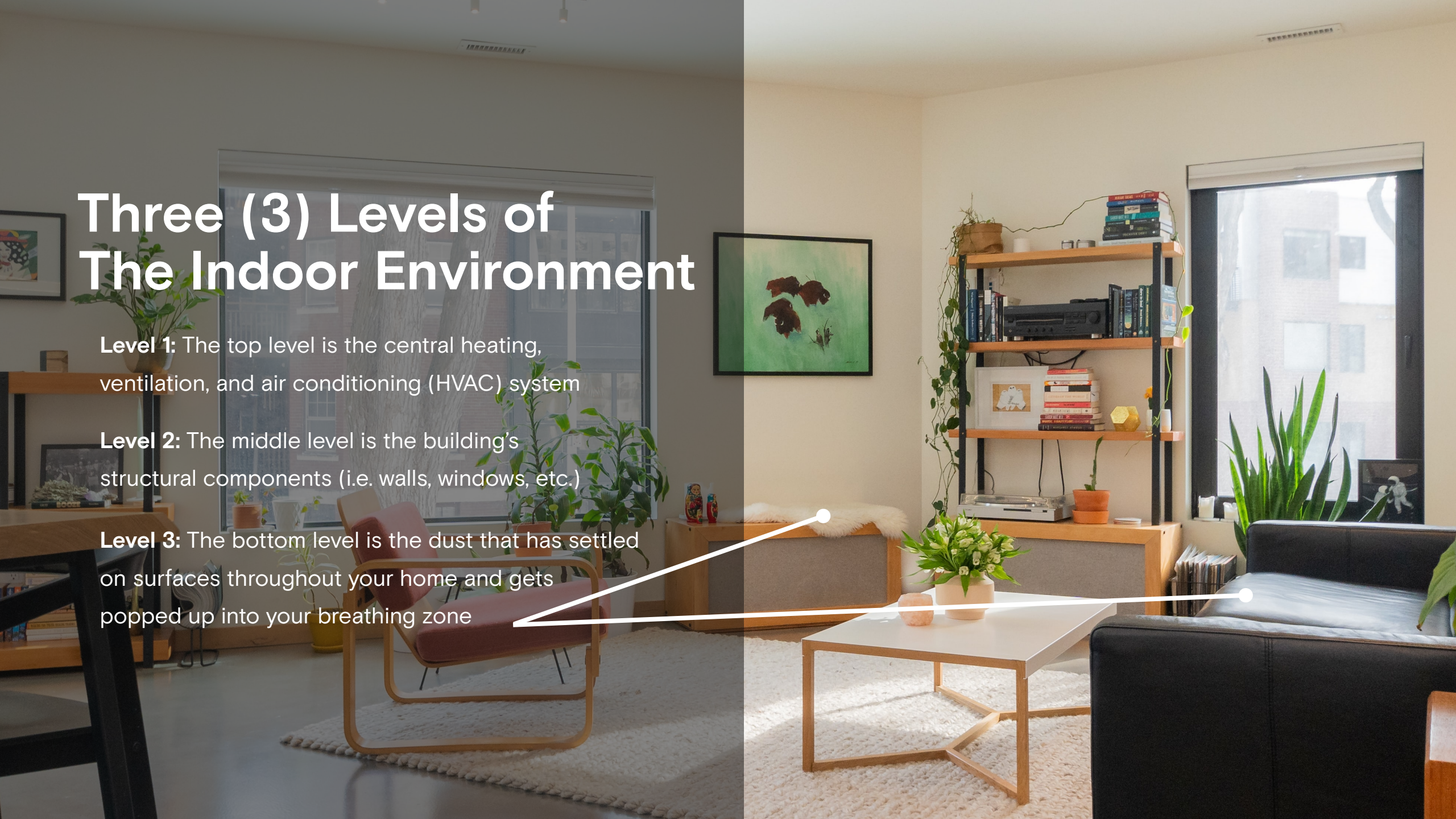


Three (3) Levels of The Indoor Environment

Level 1: The top level is the central heating, ventilation, and air conditioning (HVAC) system

Level 2: The middle level is the building's structural components (i.e. walls, windows, etc.)

Level 3: The bottom level is the dust that has settled on surfaces throughout your home and gets popped up into your breathing zone

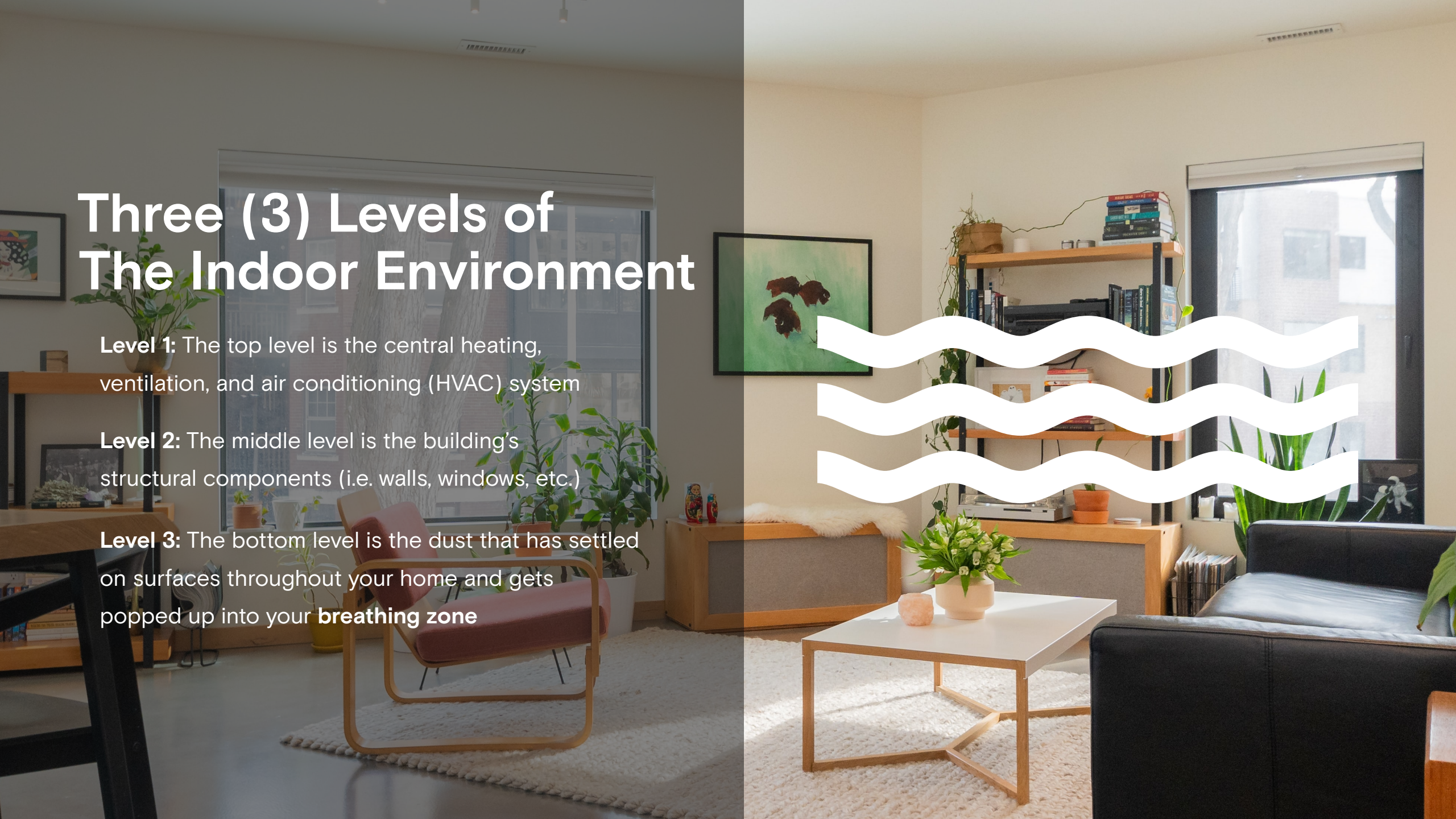


Three (3) Levels of The Indoor Environment

Level 1: The top level is the central heating, ventilation, and air conditioning (HVAC) system

Level 2: The middle level is the building's structural components (i.e. walls, windows, etc.)

Level 3: The bottom level is the dust that has settled on surfaces throughout your home and gets popped up into your **breathing zone**



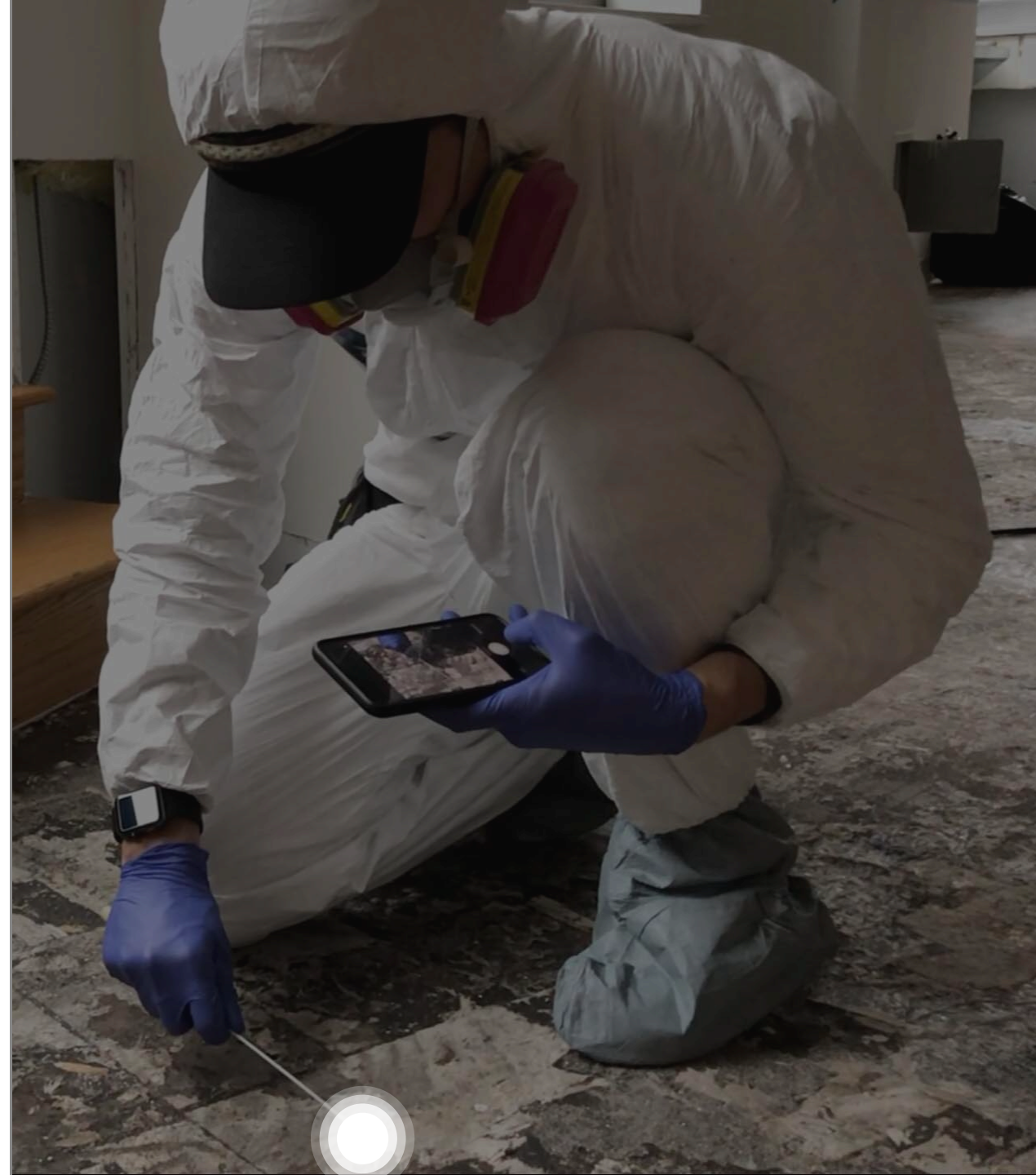
Reasons to Sample

To confirm source areas of contamination

Understand dispersion from contaminated areas of the home

To write the appropriate remediation strategy

Understand potential exposure



Acceptable Sample Types

Source Area Samples

- Targeted air
- Surface (Swab, tape, bulk)

Dispersion Samples

- ERMI
- mVOC
- Actinobacteria

Biotoxin Samples

- Mycotoxin
- Endotoxin

Goal Based Sampling Hypersensitivity

Renter

- Wants to stay
- Wants to leave
- Litigation

Homeowner

- Wants to stay
- Wants to leave

Buying or Renting

- Finding a healthy home

Insurance or Litigation

- Building a plan to maximize coverage

Goal Based Chart

*Renter

(x) = optional

	Source	Dispersion	Biotoxin
Leave	x	(x)	(x)
Stay	x	x	(x)
Litigation	x	x	x

Goal Based Chart

*Home Owner

(x) = optional

	Source	Dispersion	Biotoxin
Leave		x	x
Stay	x	x	x

Goal Based Chart

*New Home Seeker

(x) = optional

	Source	Dispersion	Biotoxin
Phase 1			
Phase 2		x	x
Phase 3	x		

Goal Based Chart

*Insurance/Litigation

(x) = optional

	Cause (Source)	Effect (Exposure)	Effect (Health Impact)
Insurance	x	x	(x)
Litigation	x	x	x